

Product Catalog

Wi-Fi and Wireless Networks

Antennas | Mounts | Enclosures | Cabling and more



Table of Contents

Antennas -----	3-7
Enclosures -----	8-9
Mounts -----	10-11
Customization -----	12
Cabling -----	13-17
Power Solutions -----	18-20
Site Survey Tools -----	21

Compatible with all major AP Manufacturers



Antennas DAS



ATS-OO-DAS-23-1NP-8

698-960/1710-2700 MHZ 2/3 DBI Tear Drop Ceiling Omni Antenna with N-Style

Frequency

698-960 / 1710-3800 MHz

Gain

2/3 dBi

Beamwidth

Horizontal: 360° | Vertical: 144° / 144°

Dimensions

8"x 4.57" (204x116mm)

Connector

N-Style Plug



ATS-OO-DAS-35-1NP-8

698-960/1710-2700 MHZ 3/5 DBI Flush Ceiling Mount Omni Antenna with N-Style

Frequency

698-960/1710-3800 MHz

Gain

3/5 dBi

Beamwidth

Horizontal: 75°/50°/60° | Vertical: 75°/50°/60°

Dimensions

8.4"x1.77" (213x45mm)

Connector

N-Style Plug

Antennas Mist AP45E 10-Element



ATS-OO-2456-466-10MPC-36

2.4/5/6 GHZ 4/6/6 DBI 10 Element Indoor Omni Antenna with 10 MPC

Frequency

2.4-2.48/5.15-5.85/6-7.125 GHz

Gain

4/6/6 dBi

Beamwidth

Horizontal: 360° | Vertical: 105°

Dimensions

6.5"x 6.3"(165mm D x 160mm H)

Connector

4MPC or 6MPC



ATS-OP-2456-8-10MPC-36

2.4/5/6 GHZ 8 DBI 10 Element Indoor Patch Antenna with 10 MPC

Frequency

2.4-2.48/5.15-5.85/6-7.125 GHz

Gain

8 dBi

Beamwidth

Horizontal: 115°/110°/110° | Vertical: 50°/25°/25°

Dimensions

15.4"x 15.4"x 2.24"(390x390x57mm)

Connector

TNC Plug, 4MPC or 6MPC

Antennas

Omnidirectional



ATS-ID90RD-245-23-1RPSP-IC-W

2.4/5 GHz 2/3 dBi White Indoor Articulating Rubber Duck Antenna with RPSMA

Frequency

2.4-2.5/4.9-5.85 GHz

Gain

2/3 dBi

Beamwidth

Horizontal: 360°

Dimensions

0.51" x 5.14" (13x130.5mm)

Connector

RPSMA, RPTNC or N-Style



ATS-OO-245-37-1NP-IC-W

2.4/5 GHz 3/7 dBi Outdoor Omnidirectional Antenna with N-Style Plug

Frequency

2.4-2.484/5.1-5.85 GHz

Gain

3/7 dBi

Beamwidth

Horizontal: 360° | Vertical: 50° / 30°

Dimensions

10.8"L (27.5cm)

Connector

N-Style



ATS-OO-245-46-4NP-36

2.4/5 GHz 4/6 dBi 4 Element Omnidirectional Antenna with N-Style

Frequency

2.4-2.5/4.9-5.85 GHz

Gain

4/6 dBi

Beamwidth

Horizontal: 360° | Vertical: 144° / 55°

Dimensions

4.7" x 2.8 (120x70mm)

Connector

RPSMA, RPTNC or N-Style



ATS-OO-245-46-6RPSP-36

2.4/5 GHz 4/6Bi 6-Element Omni Antenna with RPSMA

Frequency

2.4-2.5/4.9-5.85 GHz

Gain

4/6 dBi

Beamwidth

Horizontal: 360° | Vertical: 61° / 39°

Dimensions

6.1" x 2.8" (154x70mm)

Connector

RPSMA, RPTNC or N-Style



ATS-OO-2456-466-8PRADART-ND-36

2.4/5/6 GHz 4/6/6dBi 8-Element Omni Antenna with Right-Angle DART

Frequency

2.4-2.5/4.9-5.85 GHz

Gain

4/6/6 dBi

Beamwidth

Horizontal: 360° | Vertical: 105° / 75° / 75°

Dimensions

6.5" x 3.25" (165x82.5mm)

Connector

Right-Angle DART-8, straight DART-8 or RPSMA

Antennas

Patch



ATS-OP-245-13-4RPTP-36

2.4/5 GHz 13dBi 4-Element Patch Antenna with RPTNC

Frequency

2.4-2.485 / 5.15-5.85 GHz

Gain

13 dBi

Beamwidth

Horizontal: 15° | Vertical: 120°

Dimensions

13.77"x13.77"x1.37" (350x350x50mm)

Connector

RPSMA, RPTNC or N-Style



ATS-OP-245-8-6RPSP-36

2.4/5 GHz 6-Element Patch Antenna with RPSMA

Frequency

2.4-2.5 / 5.1-5.85 GHz

Gain

8 dBi

Beamwidth

Horizontal: 100° | Vertical: 40° / 25°

Dimensions

13.77"x13.77"x1.37" (350x350x50mm)

Connector

RPSMA, RPTNC or N-Style



ATS-OP-245-8-4RPTP-36

2.4/5 GHz 8dBi 4-Element Patch Antenna with RPTNC

Frequency

2.4-2.485 / 5.15-5.85 GHz

Gain

8 dBi

Beamwidth

Horizontal: 125° / 114° | Vertical: 35° / 24°

Dimensions

12.6"x6.7"x1.4" (320x170x35mm)

Connector

RPSMA, RPTNC or N-Style



ATS-OP-2456-6-8PDART-ND-36

2.4/5/6 GHz 6dBi 8-Element Patch Antenna with DART

Frequency

2.4-2.48/5.1-5.85/6-7.125 GHz

Gain

6 dBi

Beamwidth

Horizontal: 70°/70°/70° | Vertical: 70° / 70° / 70°

Dimensions

11.81"x11.81"x2.36" (300x300x60mm)

Connector

Right-Angle DART-8, straight DART-8 or RPSMA



ATS-OP-245-7D-6RPSP-36

2.4/5 GHz 7 dBi 6-Element Dual-Polarity 60/60 Patch Antenna with RPSMA

Frequency

2.4-2.5/4.9-5.85 GHz

Gain

7 dBi

Beamwidth

Horizontal: 66°/ 65° | Vertical: 66° / 62°

Dimensions

12.2"x8.66"x1.57" (310x220x40mm)

Connector

RPSMA, RPTNC or N-Style

ATS-OO-9in1-2832-5SP-4RPSP-18

GPS/LTE/CBRS/Wi-Fi 9-Element Omni Antenna with SMA and RPSMA



Frequency

1575.42-1610 MHz
3300-3800 GHz
698-960/1710-2690 MHz
2.4-2.482/4.9-5.825 GHz

Gain

25 dB/ 3 dBi / 2 dBi

Polarization

Right Hand Circular / Linear

Dimensions

5.1"x2.6" (130x65mm)

Connector

5 SMA (1 GPS & 4 LTE/CBRS) | 4 RPSMA (Wi-Fi)

ATS-OO-7in1-2832-3SP-4RPSP-18

GPS/LTE/Wi-Fi 7-Element Omni Antenna with SMA and RPSMA



Frequency

1575.42-1610 MHz
698-960/1710-2690 MHz
2.4-2.482/4.9-5.825 GHz

Gain

25 dB/ 3 dBi / 2 dBi

Polarization

Right Hand Circular / Linear

Dimensions

4.33"x2.09" (110x53mm)

Connector

3 SMA (1 GPS & 2 LTE/CBRS) | 4 RPSMA (Wi-Fi)

ATS-OO-3in1-2823-2SP-1RPSP-18

GPS/LTE/Wi-Fi 3-Element Omni Antenna with SMA and RPSMA



Frequency

1570.42-1580.42 MHz
1625.42 / 1525.42 MHz
698-960 / 1710-2655 MHz
2.4-2.483 GHz

Gain

2 dBi/28 dB/2 dBi/3 dBi

Polarization

Right Hand Circular / Linear

Dimensions

1.97"x1.89" (50x48mm)

Connector

2 SMA (GPS & LTE) | 1 RPSMA (Wi-Fi)

List Price

Antennas

Directional Cellular



AT-OP-LTE-11-1NP-12

698-960/1710-2700 MHz 11 dBi LTE Patch Antenna with N-Style Plug

Frequency	Gain	Beamwidth
698-960/1710-2700 MHz	11 dBi	Horizontal: 50°/ 65° Vertical: 40° / 50°
Dimensions	Connector	
17.4"x 2.55" x 8.29" (442x65x210.6mm)	N-Style Plug	



AT-OP-LTE-9-2SP-36

LTE/CBRS 2-Element 9 dBi Patch Antenna with SMA

Frequency	Gain	Beamwidth
698-960/1710-2690/3300-4200 MHz	6/9/9 dBi	Horizontal: 75°/50°/60° Vertical: 75°/50°/60°
Dimensions	Connector	
13.77"x13.77"x1.37" (350x350x50mm)	SMA (2)	

Antennas

Omnidirectional Cellular



AT-ID90RD-LTE-2-1SP-IC-W

698-960/1710-2700 MHz 2 dBi LTE Omni Antenna with SMA Plug

Frequency	Gain	Beamwidth
698-960/1710-2700 MHz	2 dBi	Horizontal: 360° Vertical: 90°
Dimensions	Connector	
8.58"x 1.02" x 0.53" (218x26x13.5mm)	SMA Plug	

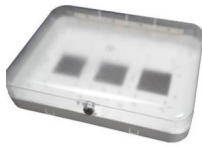


AT-ID90RD-LTE-2-1TP-IC-W

698-960/1710-2700 MHz 2 dBi LTE Omni Antenna with TNC Plug

Frequency	Gain	Beamwidth
698-960/1710-2700 MHz	2 dBi	Horizontal: 360° Vertical: 90°
Dimensions	Connector	
8.58"x 1.02" x 0.53" (218x26x13.5mm)	TNC Plug	

Enclosures



ATS-ENC-12164P-LB

12x16x4 Polycarbonate Lock Box Enclosure

Dimensions

12"x16"x4" (304.8x406.4x101.6mm)

Installation

Indoor on Wall

- Features:**
- Includes mounting bracket & universal mounting plate for multiple mount options
 - Opaque Door
 - Knockouts available on the sides for raceway and conduit



ATS-14126P-S-L-CG-POE-HC

14x12x6 Heated & Cooled PoE Enclosure with Cord Grip

Dimensions

14.5"x12"x6.6" (370.8x304.8x165.1mm)

Installation

Indoor or Outdoor on Wall or on Pole

- Features:**
- Solid Door, Latch Lock
 - Designed for temperature-limiting environment
 - Includes heater, fan and thermostat
 - All AccelTex polycarbonate enclosures can be converted to a Heated/Heated & Cooled enclosure



ATS-NL-IC-ENC-15153

15x15x3" Non-Ligature In-Ceiling Enclosure

Dimensions

14.5"x14.5"x2.96" (368x368x75mm)

Installation

Indoor on Wall

- Features:**
- Enclosure flush mounts in a wall or ceiling
 - Cover fastened with Torx security screws
 - Flush mount prevents tampering of network equipment



ATS-BOLMNT-11-STDBRN

46" x 11" Standard Brown Bollard

Dimensions

46.5" x 11.50" (1181x292.1mm)

Installation

Outdoor

- Features:**
- Protects network equipment in outdoor environments
 - Allows extension of RF coverage into outdoor locations like parking lots



ATS-14126P-S-K-NH-UBPTB

14x12x6 Polycarbonate Enclosure with Solid Door, Key Lock, No Holes

Dimensions

14"x12"x6" (355.6x304.8x152.4mm)

Installation

Indoor or Outdoor

- Features:**
- Protects network equipment from environmental threats and tampering
 - Solid Door, Key Lock

Enclosures



ATX-USE-12148

12x14x8 Under Seat Enclosure

Dimensions

12"Lx14"Wx8"D (304.8mm L x 355.6mm W x 203.2mm D)

Installation

Indoor or Outdoor

Features:

- Protects equipment from outdoor environmental threats and tampering
- Can be customized for specific applications and modified to accommodate the majority of access points



ATX-IC-ENC-CVDLB-15153

15x15x3 In Ceiling Hard Cap Covered Lock Box Enclosure

Dimensions

15.5"x15.5"x3.05" (393.7x393.7x77.4mm)

Installation

Indoor

Features:

- Flush mounts into wall or ceiling
- Front panel secured by key lock



ATX-14126P-S-L-CG-POE-H

14x12x6 Heated POE Enclosures with Cord Grip

Dimensions

14.6"x12"x6.6" (370.8x304.8x165.1mm)

Installation

Indoor or Outdoor

Features:

- Protects network equipment in temperature-limiting environments
- All AccelTex polycarbonate enclosures can be converted to a Heated/Heated & Cooled enclosure



ATX-14126P-S-L-CG-UBPTB-INTOO-46-4RPSP

14x12x6 Solid Latch Enclosures and Integrated 4 Lead 4/6 DBI RPSMA Omni

Dimensions

14" H x 12" W x 6" D (355.6 mm H x 304.8 mm W x 152.4 mm D)

Installation

Indoor or Outdoor

Features:

- Solution comes pre-drilled and ready for installation
- Includes pre-installed 4-Element omni antenna



ATX-CT-MERAKI5-2x2

Meraki AP Suspended Ceiling Tile Enclosure Mount (MR56 Style)

Dimensions

23.75"L x 23.75"W x 1.5"D (603.25mm Lx603.25mm Wx38.1mm D)

Installation

Indoor

Features:

- Secures & protects a Meraki MR56 within a standard 2x2 ceiling tile grid
- Easy to install

Mounts

ATS-APLBKT-COV-UNIV1-V3



Universal AP L Bracket Wall Mount with Cover V2

Dimensions

5.2" H x 7.4" W x 9.8" D (132mm H x 188mm W x 250mm D)

Installation

Indoor on Wall

Features:

- Allows an AP to be mounted to wall
- Cover hides cabling and power cords to maintain aesthetics

ATS-DRPMNT-UNIV1



Universal AP All-Thread Drop Mount

Dimensions

7.3" L x 7.1" W x 4.3" H (185mm L x 180mm W x 110mm H)

Installation

3/8" All Thread or Beam Clamp

Features:

- AP easily installs using pre-defined keyholes or T-Bar mount
- Mount can be installed using 3/8" All-Thread or Beam Clamp

ATS-APMNT-CORNER



AP Corner Mount for the Mist AP 61 and Mist AP 63

Dimensions

20.32" x 7 x 4.27" (516.13 x 177.8 x 108.46mm)

Installation

Indoor or Outdoor

Features:

- Allows for APs to be mounted in a corner location
- Can accommodate different APs with correct adapter brackets

ATS-APANTARTMNT-UNIV3



Universal AP and Antenna Articulating Mount V3

Dimensions

10.9"L x 8.3"W x 10.5" H (277 x 210 x 266mm)

Installation

3/8" All-Thread Mount, Ceiling, I-Beam, Metal Strapping, Wall

Features:

- Includes new mounting hole patterns to accommodate newer APs
- Modified all-thread mounting bracket to enhance security & safety

ATS-COV-117511754-WHT-ASA



11.75" X 11.75" X 4" White ASA AP Cover

Dimensions

12" H x 12" W x 4" D (304.8 mm H x 304.8 mm W x 101.6 mm D)

Installation

Indoor

Features:

- Allows an AP to be mounted to wall or ceiling
- Opaque cover provides protection and conceals APs

Mounts



ATS-DRPMNT-UNIV1-STGXTD-OOOP

Staggered AP and Antenna All-Thread Drop Mount

Dimensions

23.62"x10.24"x4.08" (600x260x103.6mm)

Installation

3/8" All-Thread or Beam Clamp

Features:

- Can interchange antenna or AP in the top or bottom position
- Opening for antenna leads
- AP mounting plate can be adjusted for AP mounting
- Beam clamp mounting designed to allow adjustments to meet beam clamp size



ATS-DRPMNT-DAP-QOP

Dual AP and Quad Antenna All-Thread Drop Mount

Dimensions

30.9"W x 9.59"H (with arms)

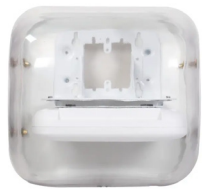
9.45"W x 9.59"H (w/o arms)

Installation

All-Thread or Beam Clamp

Features:

- Can install up to two APs
- Can install up to four antennas



ATS-APLBKT-COV-COM-UNIV1-CLR

Universal AP L Bracket Wall Mount with Complete Cover Clear

Dimensions

11.5"x11.3"x11.3" (283.1x287.02x287.02mm)

Installation

Wall

Features:

- Powder-coated steel bracket
- Universal mount with pre-defined mounting holes
- T-bar mounting plate
- Clear PETG plastic cover
- Gang-box mounting hole pattern
- 2 Ventilation caps



ATS-APMNT-FLUSH

AP Flush Mount for the Mist AP61 and Mist AP63

Dimensions

19.7"x12"x4" (497.1x304.8x101.6mm)

Installation

Wall

Features:

- Allows for APs to be mounted in a flush location
- Can accommodate different manufacturer APs with correct adapter brackets
- Powder-coated finish for indoor or outdoor installation



ATS-APLBKT-UNIV1

Universal AP L-Bracket Wall Mount

Dimensions

5.1"x7.1"x9.7" (130x180x246mm)

Installation

Wall

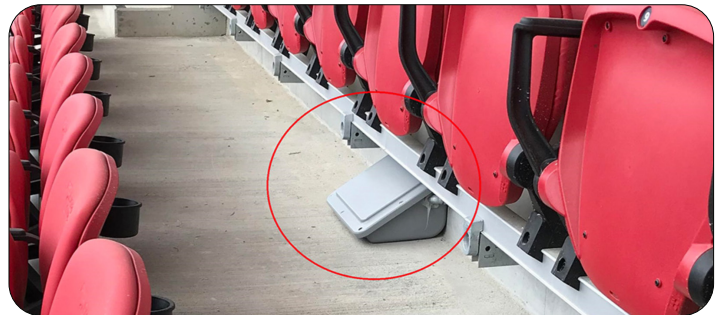
Features:

- Allows for APs to be mounted on a wall while maintaining the preferred horizontal orientation to the ground
- Easy installation of AP
- Covered version available

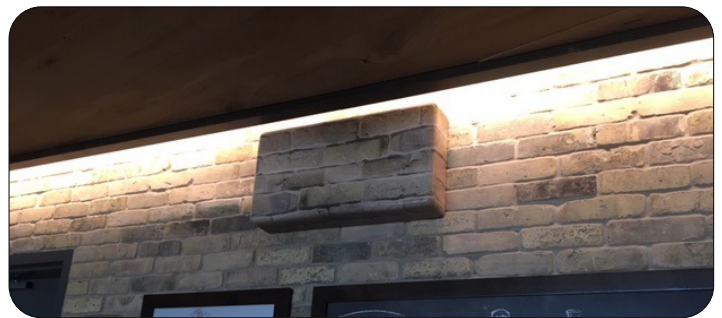
Customization

AccelTex Solutions offers the additional service of customizing products for specific environments. From enclosures tailored for specialized use and particular locations to skinning products to maintain aesthetics, AccelTex helps clients achieve maximum efficiency for their networks

Custom Enclosures



Skins



DART to N-Style

<u>ATS-100-4PDART-NP-10in</u>	100 Series 4-Port DART to N-Style Plug 10" Cable Assembly
<u>ATS-100-4PDART-NP-2ft</u>	100 Series 4-Port DART to N-Style Plug 2' Cable Assembly
<u>ATS-100-4PDART-NP-3ft</u>	100 Series 4-Port DART to N-Style Plug 3' Cable Assembly
<u>ATS-100-8PRADART-ND-NP-10in</u>	100 Series 8-Port Right Angle DART to N-Style Plug 10" Cable Assembly
<u>ATS-100-8PRADART-ND-NP-2ft</u>	100 Series 8-Port Right Angle DART to N-Style Plug 2' Cable Assembly



DART to RPTNC

<u>ATS-100-4PDART-RPTNCBHJ-10in</u>	100 Series 4-Port DART to RPTNC Bulkhead Jack 10" Cable Assembly
<u>ATS-100-4PDART-RPTNCBHJ-2ft</u>	100 Series 4-Port DART to RPTNC Bulkhead Jack 2' Cable Assembly
<u>ATS-100-4PDART-RPTNCBHJ-3ft</u>	100 Series 4-Port DART to RPTNC Bulkhead Jack 3' Cable Assembly
<u>ATS-100-8PRADART-ND-RPTNCBHJ-10in</u>	100 Series 8-Port Right Angle DART to N-Style Plug 10" Cable Assembly
<u>ATS-100-8PRADART-ND-RPTNCBHJ-2ft</u>	100 Series 8-Port Right Angle DART to N-Style Plug 2' Cable Assembly



N-Style to N-Style

<u>ATS-100-NBHJ-NP-18in</u>	100 Series N-Style Bulkhead Jack to N-Style Plug 18" Cable Assembly
<u>ATS-195-NJ-NP-5ft</u>	195 Series N-Style Jack to N-Style Plug 5' Cable Assembly
<u>ATS-240-NJ-NP-10ft</u>	240 Series N-Style Jack to N-Style Plug 10' Cable Assembly
<u>ATS-600-NJ-NP-75ft</u>	600 Series N-Style Jack to N-Style Plug 75' Cable Assembly
<u>ATS-400-NP-NP-20ft</u>	400 Series N-Style Plug to N-Style Plug 20' Cable Assembly



N-Style to RPSMA

Available with N-Style Jack, N-Style Plug, Right-Angle N-Style Plug, RPSMA Plug, RPSMA Jack connectors

<u>ATS-100-NJ-RPSMAP-18in</u>	100 Series N-Style Jack to RPSMA Plug 18" Cable Assembly
<u>ATS-195-NP-RPSMAJ-3ft</u>	195 Series N-Style Plug to RPSMA Jack 3' Cable Assembly
<u>ATS-195-NP-RPSMAJ-5ft</u>	195 Series N-Style Plug to RPSMA Jack 5' Cable Assembly
<u>ATS-195-RANP-RPSMAP-3ft</u>	195 Series Right Angle N-Style Plug to RPSMA Plug 3' Cable Assembly
<u>ATS-240-RANP-RPSMAP-5ft</u>	240 Series Right Angle N-Style Plug to RPSMA Plug 5' Cable Assembly



RPTNC to RPTNC

Available with RPTNC Plug, RPTNC Jack, RPTNC Bulkhead Jack, Right Angle RPTNC Plug connectors

<u>ATS-100-RPTNCBHI-RARPTNCP-18in</u>	100 Series RPTNC Bulkhead Jack to Right Angle RPTNC Plug 18" Cable Assembly
<u>ATS-100-RPTNCBHI-RPTNCP-18in</u>	100 Series RPTNC Bulkhead Jack to RPTNC Plug 18" Cable Assembly
<u>ATS-195-RPTNCJ-RPTNCP-5ft</u>	195 Series RPTNC Jack to RPTNC Plug 5' Cable Assembly
<u>ATS-400-RPTNCJ-RPTNCP-20ft</u>	400 Series RPTNC Jack to RPTNC Plug 20' Cable Assembly
<u>ATS-600-RPTNCJ-RPTNCP-75ft</u>	600 Series RPTNC Jack to RPTNC Plug 75' Cable Assembly



RPSMA to RPSMA

Available with RPSMA Plug, RPSMA Jack, RPSMA Bulkhead Jack, Right Angle RPSMA Plug connectors

<u>ATS-100-RPSMABHI-RARPSMA-18in</u>	100 Series RPSMA Bulkhead Jack to Right Angle RPSMA Plug 18" Cable Assembly
<u>ATS-100-RPSMABHI-RPSMAP-18in</u>	100 Series RPSMA Bulkhead Jack to RPSMA Plug 18" Cable Assembly
<u>ATS-195-RPSMAJ-RPSMAP-5ft</u>	195 Series RPSMA Jack to RPSMA Plug 5' Cable Assembly
<u>ATS-240-RPSMAJ-RPSMAP-10ft</u>	240 Series RPSMA Jack to RPSMA Plug 10' Cable Assembly
<u>ATS-400-RPSMAJ-RPSMAP-20ft</u>	400 Series RPSMA Jack to RPSMA Plug 20' Cable Assembly



RPSMA to RPTNC

Available with RPSMA Plug, RPSMA Jack, RPTNC Plug, RPTNC Jack connectors

<u>ATS-100-RPSMAJ-RPTNCP-3ft</u>	195 Series RPSMA Jack to RPTNC Plug 3' Cable Assembly
<u>ATS-100-RPSMAJ-RPTNCP-5ft</u>	195 Series RPSMA Jack to RPTNC Plug 5' Cable Assembly



N-Style to RPTNC

Available with N-Style Jack, N-Style Plug, Right-Angle N-Style Plug, RPTNC Plug, RPTNC Jack connectors

<u>ATS-195-RANP-RPTNCP-2ft</u>	195 Series Right Angle N-Style Plug to RPTNC Plug 2' Cable Assembly
<u>ATS-240-RANP-RPTNCP-10ft</u>	240 Series Right Angle N-Style Plug to RPTNC Plug 10' Cable Assembly
<u>ATS-240-RANP-RPTNCP-5ft</u>	240 Series Right Angle N-Style Plug to RPTNC Plug 5' Cable Assembly



SMA to SMA

Available SMA Plug, SMA Jack connectors

<u>ATS-240-SMAJ-SMAP-10ft</u>	240 Series SMA Jack to SMA Plug 10' Cable Assembly
<u>ATS-600-SMAJ-SMAP-100ft</u>	600 Series SMA Jack to SMA Plug 100ft Cable Assembly



N-Style to N-Style

Available with N-Style Jack, N-Style Plug, Right-Angle N-Style Jack connectors

<u>ATS-NJ-NJ</u>	N-Style Jack to N-Style Jack Adapter
<u>ATS-NJ-NP</u>	N-Style Jack to N-Style Plug Adapter
<u>ATS-NP-NP</u>	N-Style Plug to N-Style Plug Adapter
<u>ATS-NJ-NP-RA</u>	Right Angle N-Style Jack to N-Style Plug Adapter



N-Style to RPSMA

Available with N-Style Jack, N-Style Plug, RPSMA Plug, RPSMA Jack connectors

<u>ATS-NJ-RPSMAJ</u>	N-Style Jack to RPSMA Jack Adapter
<u>ATS-NJ-RPSMAP</u>	N-Style Jack to RPSMA Plug Adapter
<u>ATS-NP-RPSMAJ</u>	N-Style Plug to N-Style Plug Adapter
<u>ATS-NP-RPSMAP</u>	N-Style Plug to RPSMA Jack Adapter



N-Style to RPTNC

Available with N-Style Jack, N-Style Plug, RPTNC Plug, RPTNC Jack connectors

<u>ATS-NJ-RPTNCJ</u>	N-Style Jack to RPTNC Jack Adapter
<u>ATS-NJ-RPTNCP</u>	N-Style Jack to RPTNC Plug Adapter
<u>ATS-NP-RPTNCJ</u>	N-Style Plug to RPTNC Jack Adapter
<u>ATS-NP-RPTNCP</u>	N-Style Plug to RPTNC Plug Adapter



RPSMA to RPSMA

Available with RPSMA Jack, RPSMA Plug, Right Angle RPSMA Jack connectors

<u>ATS-RPSMAJ-RPSMAP-RA</u>	Right Angle RPSMA Jack to RPSMA Plug Adapter
<u>ATS-RPSMAJ-RPSMAJ</u>	RPSMA Jack to RPSMA Jack Adapter
<u>ATS-RPSMAJ-RPSMAP</u>	RPSMA Jack to RPSMA Jack Adapter
<u>ATS-RPSMAP-RPSMAP</u>	RPSMA Plug to RPSMA Plug Adapter



RPSMA to RPTNC

Available with RPSMA Jack, RPSMA Plug, RPTNC Jack, RPTNC Plug connectors

<u>ATS-RPSMAJ-RPTNCJ</u>	RPSMA Jack to RPTNC Jack Adapter
<u>ATS-RPSMAJ-RPTNCP</u>	RPSMA Jack to RPTNC Plug Adapter
<u>ATS-RPSMAP-RPTNCJ</u>	RPSMA Plug to RPTNC Jack Adapter
<u>ATS-RPSMAP-RPTNCP</u>	RPSMA Plug to RPTNC Plug Adapter



RPTNC to RPTNC

Available with RPTNC Jack, RPTNC Plug, Right Angle RPTNC Jack connectors

<u>ATS-RPTNCJ-RPTNCP-RA</u>	Right Angle RPTNC Jack to RPTNC Plug Adapter
<u>ATS-RPTNCJ-RPTNCJ</u>	RPTNC Jack to RPTNC Jack Adapter
<u>ATS-RPTNCJ-RPTNCP</u>	RPTNC Jack to RPTNC Plug Adapter
<u>ATS-RPTNCP-RPTNCP</u>	RPTNC Plug to RPTNC Plug Adapter





ATS-UPS-15AH-12106P

15AH LiFePO4 12x10x6 UPS Battery Backup Solution

Dimensions 12"x10"x6" (304.8x254x152.4mm) 9.45"W x 9.59"H (w/o arms)

- Features:**
- Fully integrated unit with charge controller, a 12V 15Ah LiFePO4 Battery
 - Multiple output power option include PoE (802.3af/at) and 12V DC
 - 12"x10"x6" Polycarbonate Enclosure with Solid Door, Latch Lock

ATS-UPS-30AH-14126P

30AH LiFePO4 14x12x6 UPS Battery Backup Solution

Dimensions 14"x12"x6" (355.6x304.8x152.4) 9.45"W x 9.59"H (w/o arms)

- Features:**
- Fully integrated unit with charge controller, a 12V 30Ah LiFe PO4 Battery
 - Multiple output power option include PoE (802.3af/at) and 12V DC
 - 14"x12"x6" Polycarbonate Enclosure with Solid Door, Latch Lock

ATS-UPS-60AH-16148P

60AH LiFePO4 16x14x8 UPS Battery Backup Solution

Dimensions 16"x14"x8" (406.4x355.6x203.2mm) 9.45"W x 9.59"H (w/o arms)

- Features:**
- Fully integrated unit with charge controller, a 12V 60Ah LiFe PO4 Battery
 - Multiple output power option include PoE (802.3af/at) and 12V DC
 - 16"x14"x8" Polycarbonate Enclosure with Solid Door, Latch Lock

Power-2-Go Kits



ATS-POWER2GO-V1

Power-2-Go V1 for the IBR900

Dimensions
13"x11"x4.5" (330x279x114mm)

- Features:**
- Rugged case with handle
 - Integrated wall charger, 5-in-1 antenna and Accelerator battery pack
 - External ports for operation without opening case
 - Router not included



ATS-65W-OD-POE-INJ

65W 10/100/1000 Outdoor PoE Injector (802.3af/at)

Dimensions

11.02"x8.07"x3.15" (280x205x80mm)

Features:

- Outdoor single port midspan solution
- Supports 802.3af/at powered devices
- Can be powered using DC or AC voltage and comes with built in surge protection



ATS-65W-POE-INJ

65W 10/100/1000 PoE Injector & Line Cord (802.3af/at)

Dimensions

4.84"x2.36"x1.57" (123x60x40mm)

Features:

- Converts AC line voltage into PoE
- Includes in over voltage, over current and short circuit protection



ATS-30W-POE-INJ

30W 10/100/1000 PoE Injector and Line Cord (802.3af/at)

Dimensions

6.89"x3.62"x1.26" (175x92x32mm)

Features:

- Converts AC line voltage into PoE
- Includes in over voltage, over current and short circuit protection
- Supplies 26W to a device and consumes 30W



ATS-90W-POE-INJ

90 Watt 10G PoE Injector and Line Cord (802.3af/at/bt)

Dimensions

6.89"x3.62"x1.26" (175x92x32mm)

Features:

- Converts AC line voltage into PoE
- Includes in over voltage, over current and short circuit protection



ATS-LP-N-BHJ-P

N-Style Bulkhead Jack to Plug Lightning Arrestor

Dimensions

2.68"x1.22"x0.91" (68x30.9x23mm)

Features:

- Bi-directional gas discharge tube lighting arrestor
- Protects equipment from the buildup and discharge of static electricity



ATS-LP-RPSMA-BHJ-P

RPSMA Bulkhead Jack to Plug Lightning Arrestor

Dimensions

2.2"x1.21"x0.91" (56x30.7x23mm)

Features:

- Bi-directional gas discharge tube lighting arrestor
- Protects equipment from the buildup and discharge of static electricity



ATS-LP-RPTNC-BHJ-P

N-Style Bulkhead Jack to Plug Lightning Arrestor

Dimensions

2.67"x1.21"x0.91" (67.7x30.7x23mm)

Features:

- Bi-directional gas discharge tube lighting arrestor
- Protects equipment from the buildup and discharge of static electricity



ATS-LP-SMA-BHJ-P

RPSMA Bulkhead Jack to Plug Lightning Arrestor

Dimensions

2.34"x1.22"x0.91" (59.4x30.9x23mm)

Features:

- Bi-directional gas discharge tube lighting arrestor
- Protects equipment from the buildup and discharge of static electricity



ATS-SS-64V-10KA-10GBPS-BT

10GBPS Ethernet Surge Suppressor for 802.3at/at/bt

Dimensions

4.72"x1"x1" (120x25.4x25.4mm)

Features:

- Bi-directional
- Protects equipment from the buildup and discharge of static electricity

**There is a Universal Adapter with Plugs for the U.S., Australia, Europe and the U.K. available separately

ATS-SSBP-0



The Accelerator Site Survey Battery Pack V0 (non 802.3 Compliant)

Dimensions
5.3"x3.9"x1.7" (135x100x43mm)

Features:

- 24V, 1A PoE Output
- Carrying case
- 48 PoE Passive Output

ATS-SSBP-1



The Accelerator Site Survey Battery Pack V1

Dimensions
5.3"x3.9"x1.7" (135x100x43mm)

Features:

- 24V, 1A PoE Output
- Leather Case with Straps
- 802.3af/at Output

ATS-SSBP-2



The Accelerator Site Survey Battery Pack V2

Dimensions
5.5"x3.9"x1.875" (140x100x48mm)

Features:

- 802.3af/at/bt (Type 3) Output
- Leather Case with Straps
- Up to 20V, 5A USB-C
- 1/4" Threaded insert for DIY Mounting



www.acceltex.com